

Process Portfolio

August, 2015- April, 2017

In this process portfolio, all the artworks that are not made by me would have this kind of orange box

The overall theme of all my artworks is "Aloneness". Aloneness is a general term. It describes the situation of being alone but doesn't express any specific emotion. This key word indicates the main idea of all my artworks since the exhibition is aiming to dispel the stereotype of aloneness -- that it is absolute negative -- and encourage dialectic interpretations on aloneness.

Objective of my artworks

Artwork No.1---Wood-cut print and painting. Objective:To show that, people are never alone, since their soul accompany them.

About the good side of aloneness

Artwork No.2---Oil painting on canvas. Objective:To show saying alone can make you have a clear self-awareness and self-understanding.

Artwork No.3---Oil painting on carved wood. Objective: Show that, people who like to stay alone can be more successful in their field, since they have more time to concentrate on their work and having self-reflection.

Artwork No.4---Sculpture. Objective: To show the aloneness while others don't or can't understand you.

Artwork No.5---Weaving. Objective:To tell girls who want use luxury product to hide their aloneness and self-abasement that, the value of themselves and whether they are lonely or not is decided by themselves.

About Luxury

Artwork No.6--- Oil painting. Objective: To show that, the reason that we love is our fear of loneliness. Therefore, love is a motivated by our self-interest. The "selfless love" that we eulogize is not exist.

"Play Music to The Cow"
(a Chinese idiom)

Artwork No.7--- Weaving. Objective: To show some girls want use beautiful clothes and luxury product to hide there aloneness and self-abasement, but in fact they did not made it and get lost on the way to chase money and luxury life.

Artwork No.9---Objective:To show that aloneness is the paradox of humanity. It is natural and reflects the inner conflicts of human beings, i.e. the desire to resonate yet the necessity for privacy, the need to escape loneliness yet the indifference to others.

Artwork No.8---silk-screen printing. Objective: To show the aloneness which caused by the pressure of living in big city and the fast tempo of life.

Artwork No.10---Oil on build object. Objective: To show the aloneness which caused by the lack of understanding and communication.

silk -screen printing

Artwork No.11---silk screen printObjective:The isolation between human and nature result in our aloneness. People have to understand the insignificance of human.

Relevance: In lots of people's mind, aloneness is a bad thing, but in my mind, it is not always bad, sometimes being alone can help you know more about yourself.

Objective: To show that, people are never alone, since their soul accompany them.



Evening, Honfleur.
1886, Georges-Pierre Seurat
oil on canvas, with painted wood frame
78.3*94cm (source from moma.com)
March 2016

This is a **pointillism artwork**, artist use spots in different colors to construct the artwork. The dots makes a special flickering effects (the artist use dots in three primary color red, yellow and blue in the artwork, so viewers' eyes would mix these three colors automatically like watching the screen of TV).

The artist draw a frame around the artwork to separate the artwork to the real world, but there are also red and yellow spots on the frame. It makes the viewers feel the sunlight is shining out, and shine upon the frame.

Influenced by other artwork

I'm going to use pointillism to create a flickering effects in my artwork to help express my objective and attract viewer's view.

I will use **repetition of the same image with different form**(painting, wood-cut printing, paper-cut) to unify the artwork and express the idea of not lonely. I will try to make a **pointism** artwork since I'm interested in this style. I think this style is suitable for my work, because pointillism is the collection of points in red, blue and yellow. This kind of sense of collectivity help express the emotion of not lonely.

Rough Design

Artwork No.1

Let's Go for a Walk



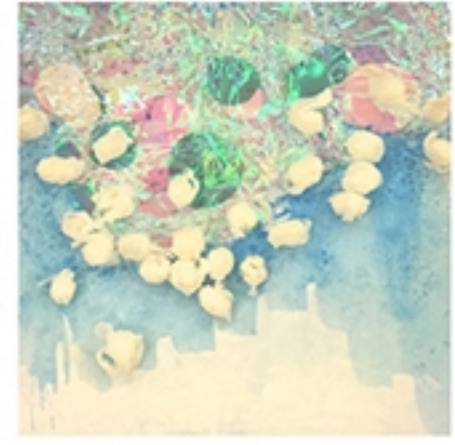
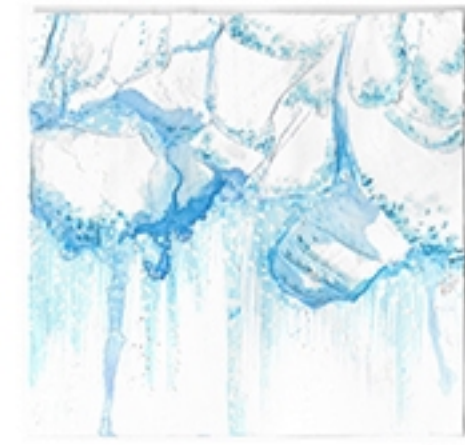
Final work

title: *Let's go for a walk*

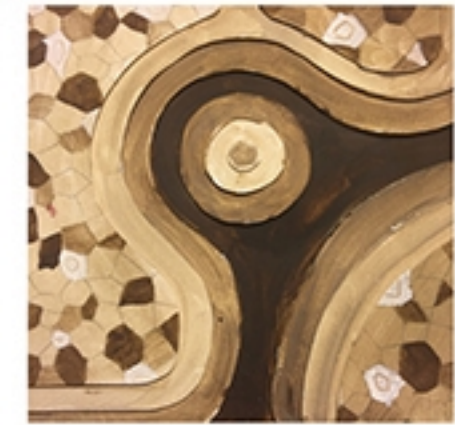
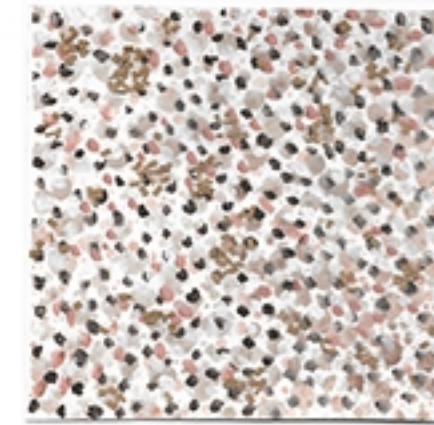
media: printing ink, acrylic paint, acrylic moderate paste, watercolor paint.

Size: 25*25*4

My final design is based on my second thumbnail design. I change the size of the artwork to be a square, and make the shadow and the legs of the woman occupy a larger ratio in the artwork, and make it to be four pieces with different surface, color and texture, but created from the same design. So, the for of them would create more unity to the artwork, which shows there are always something is accompanying you, and support my objective which announce being alone sometime is a good thing and people should not be afraid of it.



surface#1



surface#2

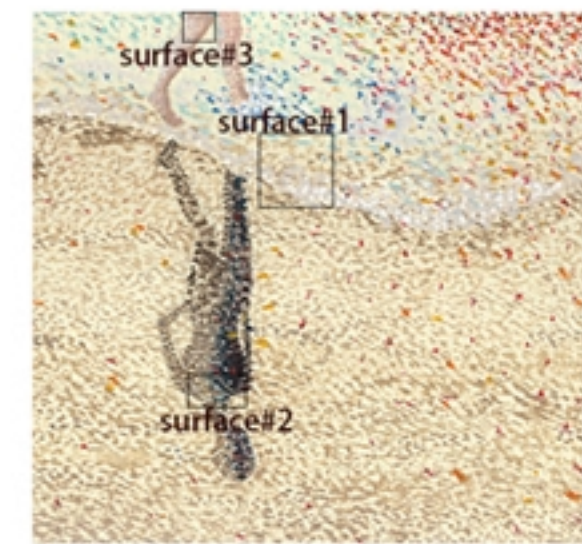


surface#3



Surfaces and skills

wood-cut print



reflection

This is my second artwork in the DP course, the first one is a painting which I think is not good enough to be put in my exhibition. I think I get some improvement by doing this artwork since I researched the style of artist, and use more principles of design (repetition) which help achieve my objective-dispel the loneliness feeling by repetition. Beside it, I also learnt a new skill which is wood-cut print.

Objective: To show the positive side of aloneness--saying alone can make you have a clear self-awareness and self-understanding.

Thumbnail Design #1



Final Design



In the final design I add some other people in the artwork behind the woman. Those people are more abstract and incomplete, and blending with the background. They are facing each other which means they are not alone not concentrate on their job. Also I make the background of the artwork be more active and various, so the artwork become more interesting.

In this painting, the girl is drawing herself out of the background alone without any reference, naturalistically. I use the behavior of drawing self portrait to express the idea of knowing yourself because I think you can draw a subject perfectly only if you observed it carefully and know a thing good enough. I make the background in pink and non-representational, and make the person naturalistic, and emphasize the girl by this contrast.

Third Party Evaluation I didn't draw face for the three girls who are abstract, because I thought face is the place that make them be recognizable. But after discuss with my friends and teacher, I realize it's difficult to show those girl who are abstract are communicate with each other, so I decide to draw mouths to them.



Before I make the final artwork, I'd like to draw an observational drawing to make sure I have enough control on the subject that I'm going to paint.

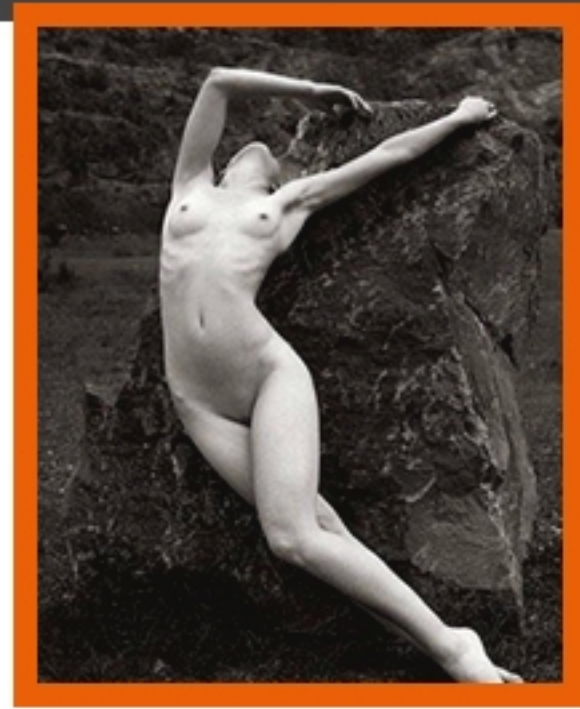
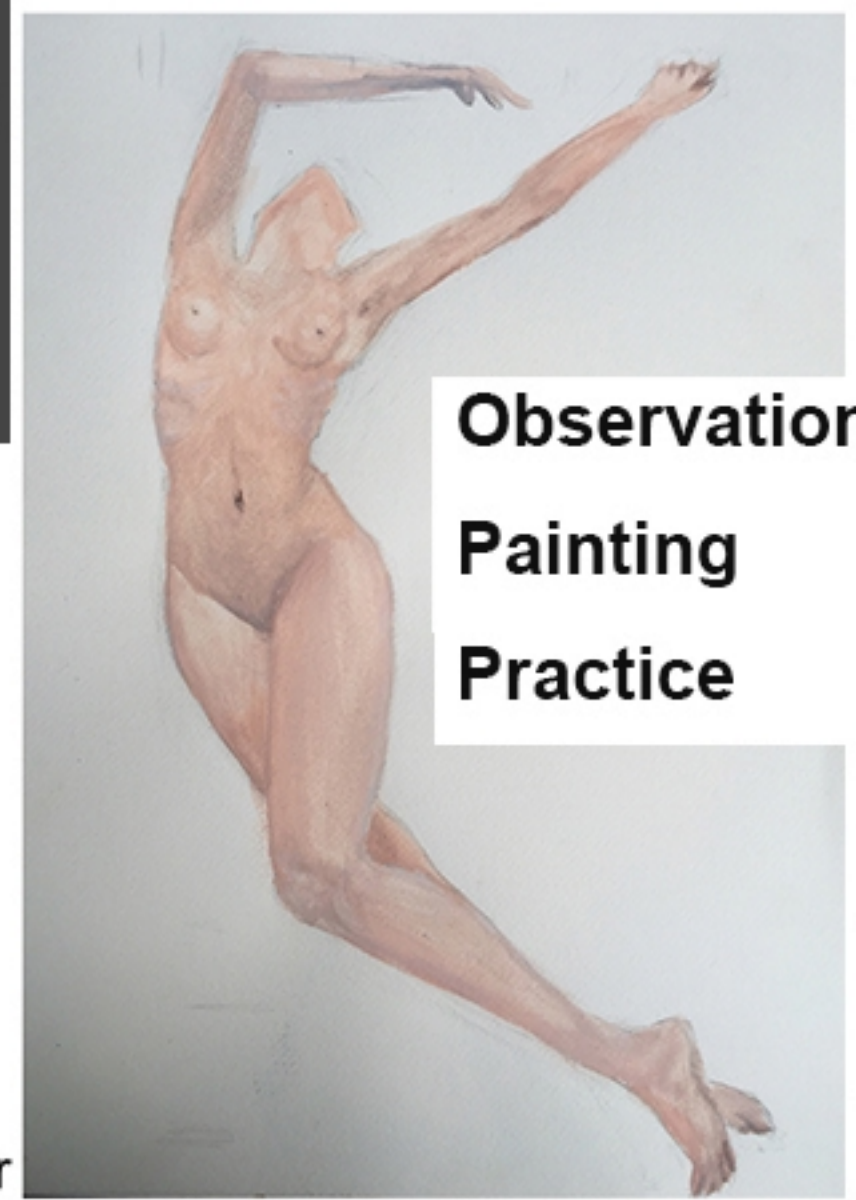


Photo took by Tomas Rucker



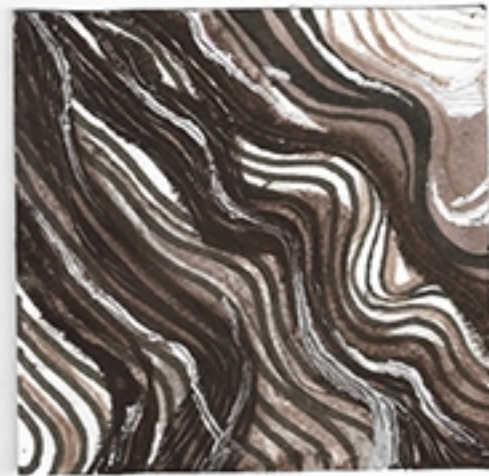
Observational Painting Practice



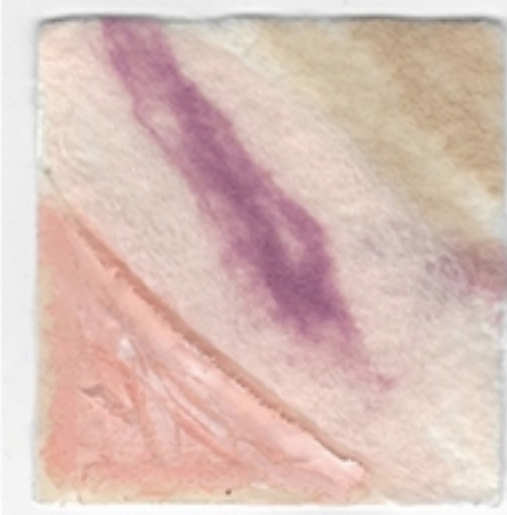
pre-experiment of self-portrait.(out-line my face on a mirror alone the reflection.)



#1



#2

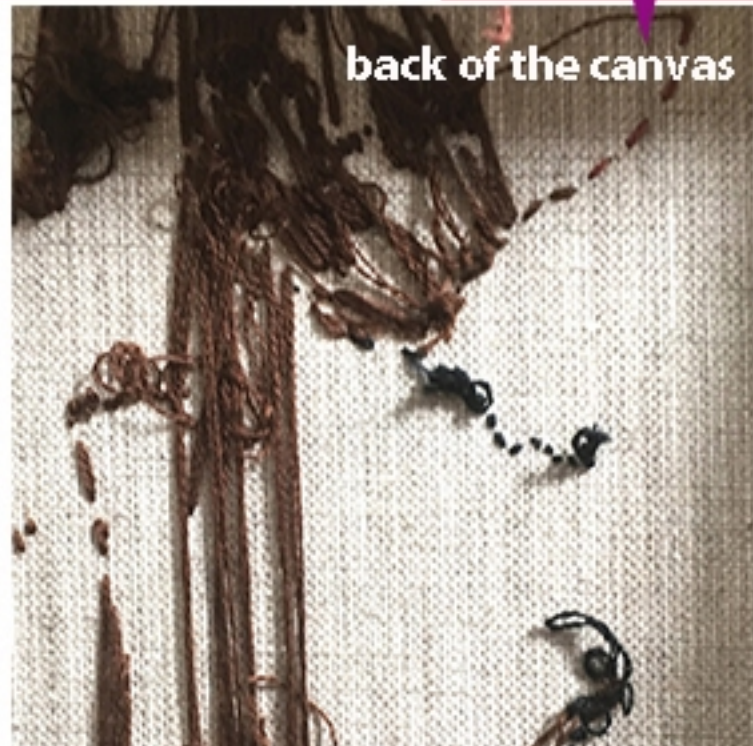


<http://art.ifeng.com/2016/0311/2780408.shtml>



oil painting

sewing



back of the canvas



#3

Once, I visited an exhibition of Yang Shu. He have use a lot of materials in his artwork, and he even combine acrylic paint, collage, stitchwork in one artwork, it inspired me to use stitchwork in the artwork to add more layers to the art-

Exhibition in Qian Gaoyuan gallery, 16th March- 18th June
 No Name 2016 No.12 Yang Shu Acrylic paint, collage, stitchwork
 paperboard 70×50cm



Process of making oil painting



Self-portrait, 100×100cm



Finished work which have been exhibit in the exhibition

Artwork No.3

In the Field

Alexander Calder
Gibbetur, 1936



Objective: The advantage of being alone—people who like to stay alone can be more successful in their field, since they have more time to concentrate on their work and having self-reflection.

Alexander Calder like to use lever principle to create informal balance in his artwork. Lever principle is a basic principle in Physics. It is a convictive and confirmed true principle in science. The use of lever principle create a natural balance in his artwork, and express his concept in an objective manner. I also hope to express my theme of my artmaking which is aloneness, an emotional term, in this kind of objective manner.

**Influenced by
other artist**

source from www.moma.com

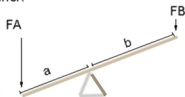
Alexander Calder

Lobster Trap and Fish Tail Rosbury, 1939

Lever principle:

F: force, a,b:length

$$MA = \frac{FB}{FA} = \frac{a}{b}$$





The design used symbolism and the polysemy of words. The gold ball represent sun which indicate the universality of the objective. The wood in the artwork can be described as “field”, and field also have another meaning which is the career of a person. The person who walked in the branches alone can stand in a higher position, and the people in another side of the branch with other people don't. This represent the sucess of this person.

Thumbnail Design

Final Design

Lever Principle informed by Alexander Calder



Surface exploration

I carved the wood which is the support of the artwork, to make the branches more interesting and realistic.



Final Artwork

Title: *In the Field*

Size: 140*80cm

Media: Oil and gypsum on carved wood.

Description: Aloneness might make people be more successful in their career by adding focus to work. The artwork has influenced by Alexander Calder's use of lever principle in his artwork "Gibraltar", to bring some scientific idea to the artwork. It makes the artwork have a clear logic and be convincing. "Field" is a polysemy, it can both mean work fields (career) and land. The artwork has used the multi-meaning of the word and make it to be the implicit meaning of the artwork.



Artwork "In the Field" exhibit in my exhibition

Artwork No.4 Play Music to the Cow I

Inspiration Flow Chart

Relevance: This idea was inspired by the whale, *alice*. The call of *alice* is about 52Hz, it's different to the call of other whales. It means other whales might never receive his call and communicate with him. People named him as 'the loneliest whale in the world'.

sources from <http://www.sjzz.cc.html> October 2016

In the society people do not appreciate others work and words, they only care about themselves.

Objective: To show the aloneness while others don't or can't understand you.

In Chinese there is a idiom which is 对牛弹琴 (play the harp to a cow) which means talk to the brick wall.

Use animal image to show the feel of alone, so it provide another angle of view to people to view the feeling of lonely, so they can have a better understanding, and grab viewer's view (cause animals are adorable.)

To bring this Chinese idiom to a world of idea, I think I should bring something represent western culture, I think piano is a good object, because it is a symbol of western culture and means the same thing as harp in Chinese.

Aloneness

Designs

Picasso's use of color, shape, and exaggeration

Artwork that influenced me



Guernica, 1937, Picasso, 349*776cm, oil on canvas

source form the book 'History of Art (Chinese version)'
The objective of Guernica is to reflect the cruelty of Spanish Civil War, and preach against war.

Picasso use the color and line visually associate with newspapers and abstract shape and placing those shapes at exaggerated and fragmented angles to express the cruelty and sadness of the current event at that time.

I also like to the black and white color which associated with the color of newspaper and use abstraction of shape and placing those shapes at exaggerated and fragmented angles to attract viewers attention and give the artwork a kind of depressing feeling.

In the thumbnail, the main concept was developing based on the idiom 对牛弹琴 (play the harp to a cow) . I think this idiom perfectly described a state of loneliness which we try to resonate with others, but others cannot understand.

2ND Thumbnail Design

I use color and shape association with piano. In Chinese, there's no difference between harp and piano, so I change the harp to be piano and bring the western culture into the artwork to attract viewer's attention. I think this idiom perfectly address my objective. I think communication is involve both sides, but people only think about themselves, the cow can also have the aloneness feeling because you cannot understand him. The mouth personify the cow, it help making people think in the cow's perspective.



Design influenced by Picasso's Guernica



The basic idea of the artwork is to show the loneliness caused by the lack of knowing. In the artwork the frame and those vertical shadows are the symbol of others comments and the rules of the society. The girl works so hard to get out of the frame and talk, but in another hand, she hold the frame by herself. This is a reflection of society. The person who feels lonely because of other's indifference is also the person build up the indifference and care-less world.

1ST Thumbnail Design

I use the color association with newspaper to show that this issue is an unsolved but current event and express a depressing feeling to the viewer.

Thumbnail Design

Advantage- The representation is stronger
 -interesting shadow stuff
 -strong vision impact because it is based on photo

Disadvantage- Overdirect?
 -the form of collage easy to make the artwork lack of detail

Advantage-Culture context

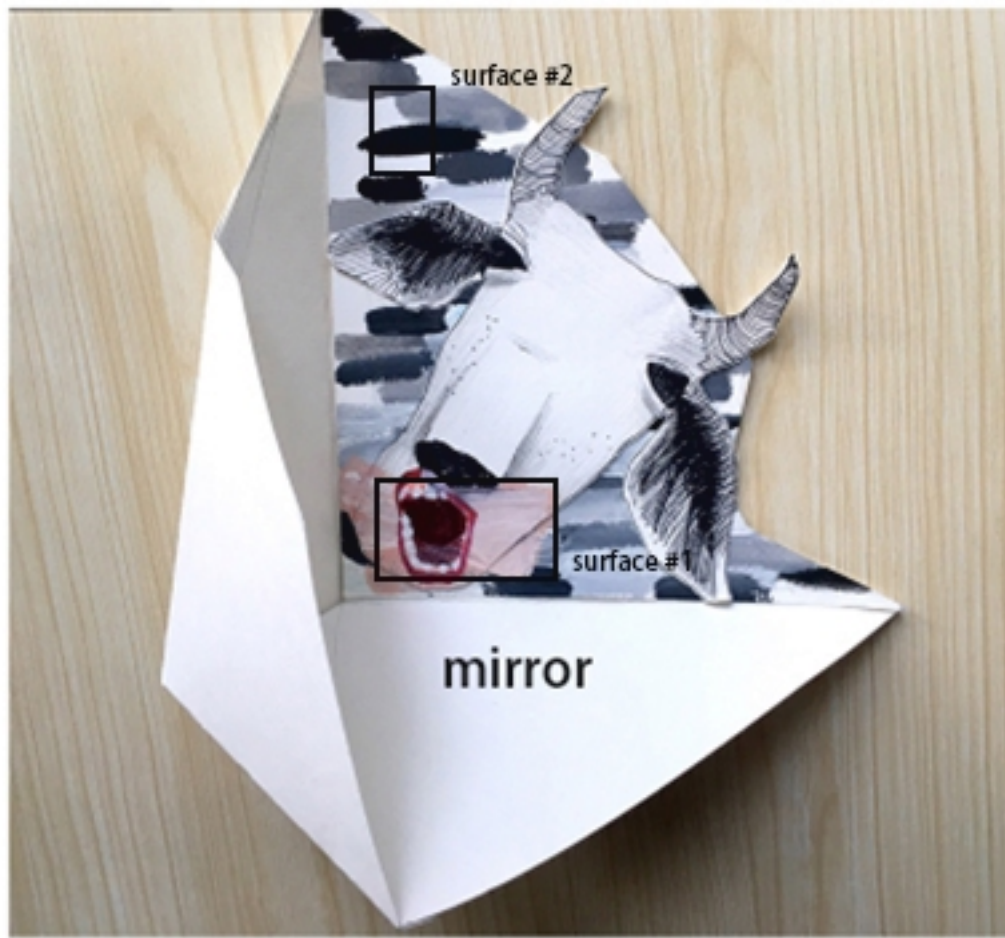
- representation
- both eastern and western culture
- Use animal image which is adorable and can grab viewer's view

Disadvantage- Technical problem (if it would be a sculpture)

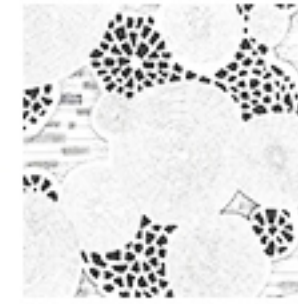
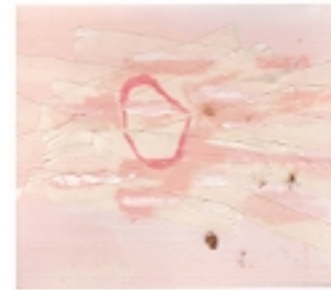
-Does the viewer's can really understand the concept

COMPARE

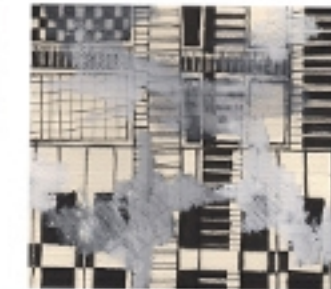
By compare these two design, I think thumbnail #1 is better. The concept of thumbnail #1 is stronger, and it contains more culture context .



Surface#1



Surface#2



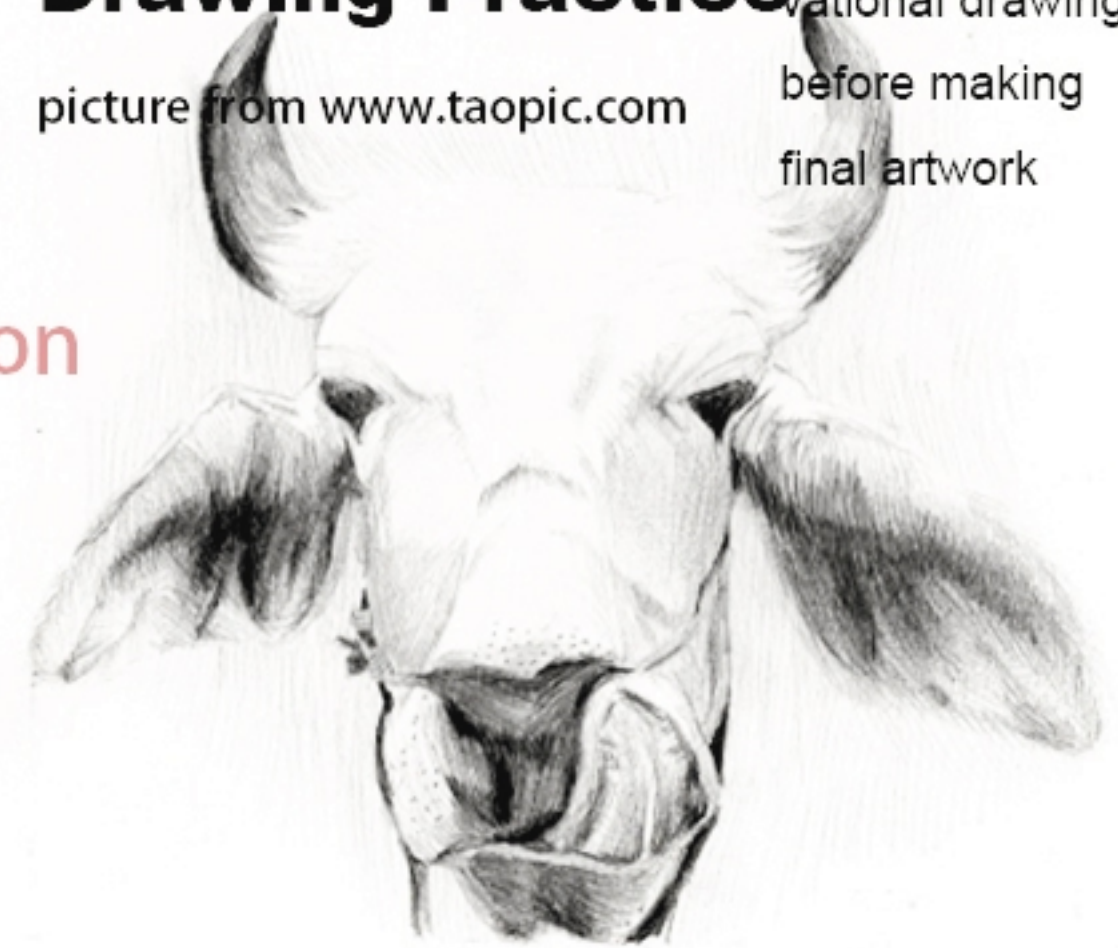
Surfaces
exploration



Observational Drawing Practice

picture from www.taopic.com

It's my habit to make an observational drawing before making final artwork



Final Design

The final design is changed based on the thumbnail No.1. I make it to be a sculpture, and make the artwork to be a half seal cube, so the design can express the aloneness better--- the image and reflection in the mirror can be interpret as a process of communicate, the mirror can only reflect part of the cow, this represent the kind of miss communication and understanding of each other.

In addition, because of the use of mirror, the artwork is also interactive as well. Viewers can see their own reflection through the mirror, this help attract viewers attention and also let them be a part of the artwork and think more about this miss understanding issue.

Title: Play Music to the Cow

Support: wood and mirror

Media: cralic color, glass cements, wood

Form: sculpture

Size: 60 × 60 × 60cm

My artwork "Play Music to the cow", in my exhibition



final artwork which have been exhibited in my exhibition



Title: ***Play Music to the Cow I***

Size: 60x60x60cm

Media: acrylic painting on wood, mirror.

The main idea of the artwork is the Chinese idiom "play the harp (music) to the cow" which described the condition that people do not understand each other. How can the cow understand the value of this music? The artwork personates the cow, and promotes people think about this misunderstanding relationship. The use of color of the artwork is influenced by Picasso's "Guernica" that use colors which associate with the color of newspaper to create a serious atmosphere and attract viewers' attention.

According to all, I think the idiom, "play the harp to the cow" is very suitable for my objective, I hope to make another artwork with the same idiom and theme.

Artwork No.5 *New Arrival*

Objective: To tell girls who want use luxury product to hide their aloneness and self-abasement that, the value of themselves and whether they are lonely or not is decided by themselves, not depend on the money and luxury product they have.

Relevance: Nowadays lot of people believe good clothes can bring confidence and opportunity to a person. People think your clothes shows you identity. And thousands of people are crazy for the fashion shows and good clothes. I think this is caused by the blundering social atmosphere. I don't think all of those people know what they want, they might only want to do the same things as the majority did to hide their aloneness and self-abasement.



THE LAST SUPPER, 1986 | ACRYLIC AND SILKSCREEN INK ON CANVAS, 1998 (198.1*777.2CM) Andy Warhol

In this artwork, Andy Warhol has **appropriated** Leonardo da Vinci's work. He use repetition and black and red color in the artwork to decline the holy feeling that this religion artwork brings. He used a **contrast between fake and genuine** to make us understand **the difference between older traditional ways and modern mass-production mass-culture**.

I also like to appropriate a famous renaissance Italian work, and recreate based on it. Therefore, the objective in his artwork can also be part of mine. Beside this, use a famous artwork as an original image can also attract viewers' attention.

Investigation



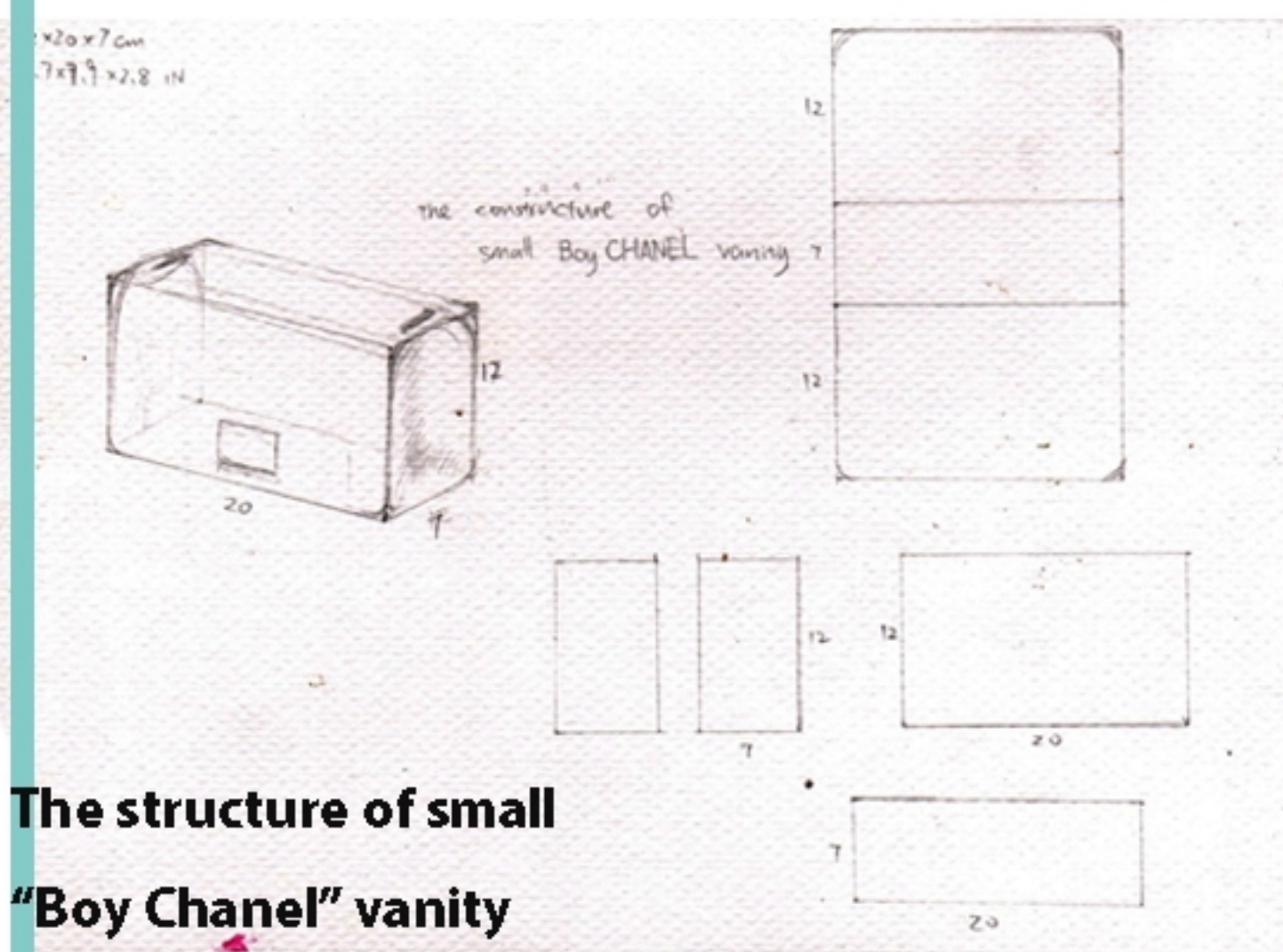
Chanel typical knit tweed fabric .
source from: <http://www.chanel.com/winter-2016-17.16K.16K10.cat.iac.html> .



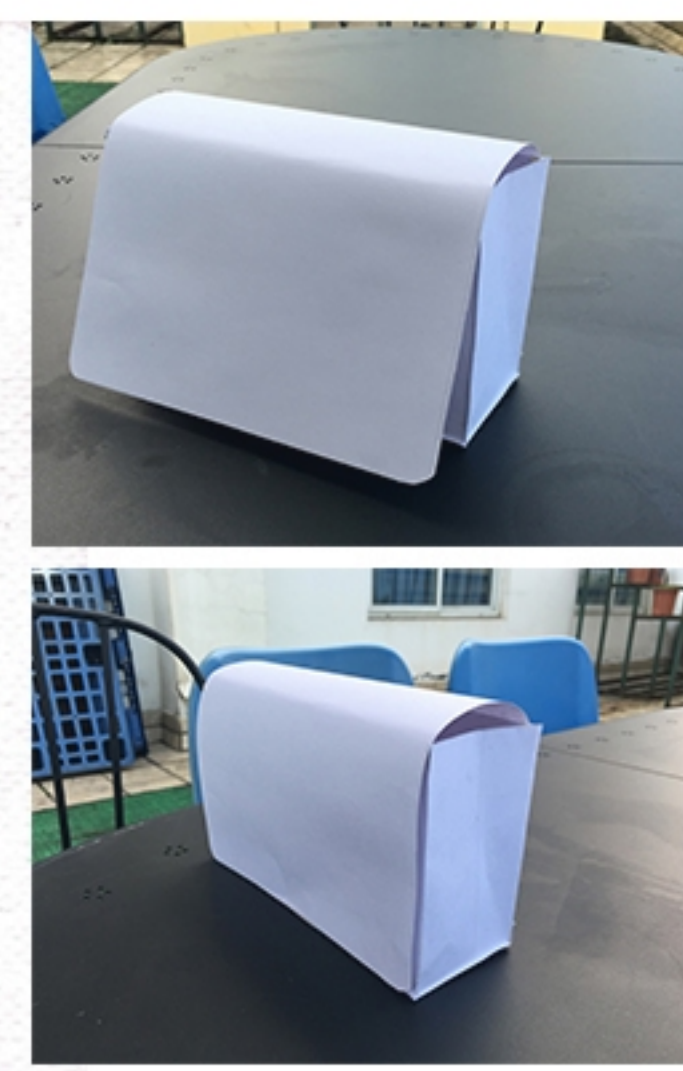
SMALL BOY CHANEL FLAP BAG
PEARLY GALUCHAT, METALLIC LAMBSKIN & RUTHENIUM METAL SILVER
4.7 X 7.9 X 2.8 IN (CM)
A67085 Y61107 45002

The classical Chanel bag is very famous, and it becomes a symbol of luxury life in young girls' mind. I'm going to use the package of Chanel to make a fake Chanel vanity. The bag is fake but all the materials of making the artwork are real Chanel products. It makes the viewers think, whether luxury life can really help them to be confident and not feel lonely, or they are the same as the artwork that I made (fake, though they are making by real Chanel.)

In another hand, the Chanel bag can also attract the viewers' attention, since it is a controversial issue. Lots of people think the price of Luxury product is higher than the real value of it. Also, my target audience, girl who are chasing money and luxury life might pay more attention on it.



The structure of small "Boy Chanel" vanity



Framework of the bag(practice)

Feedback: The inner frame of the bag should be narrower.

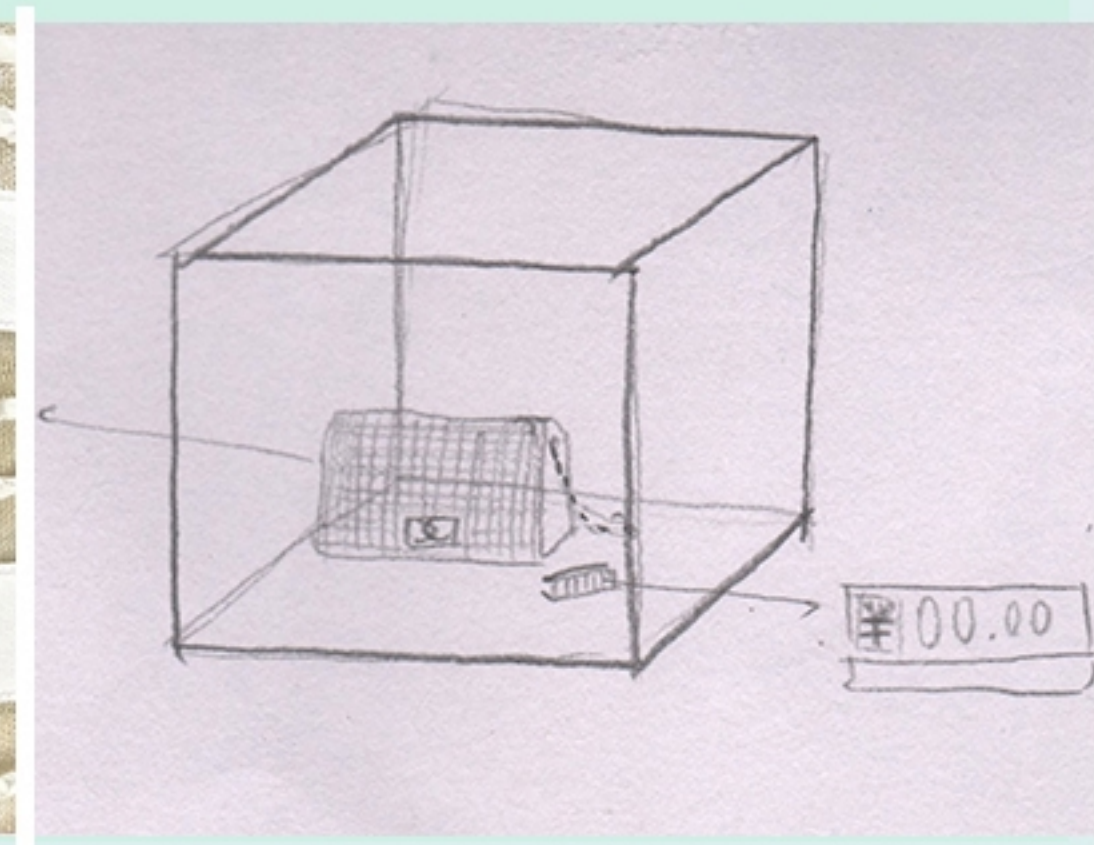
In the design, I put the bag into a cabinet, and put a price tag beside it. I do this, because the first react of most people when they see a bag in a cabinet is to guess the price of it. The price of a Chanel bag is certain, but the price of a artwork is not. So, it means, Although the bag is fake, but the if you consider it as a artwork it might worth more than a real Chanel. This design help express the idea that, the value of a person is decide on their own cognization on themselves.

Design

Chanel typical knit tweed fabric
source from: <http://www.chanel.com/winter-2016-17.16K.16K10.cat.jac.html>

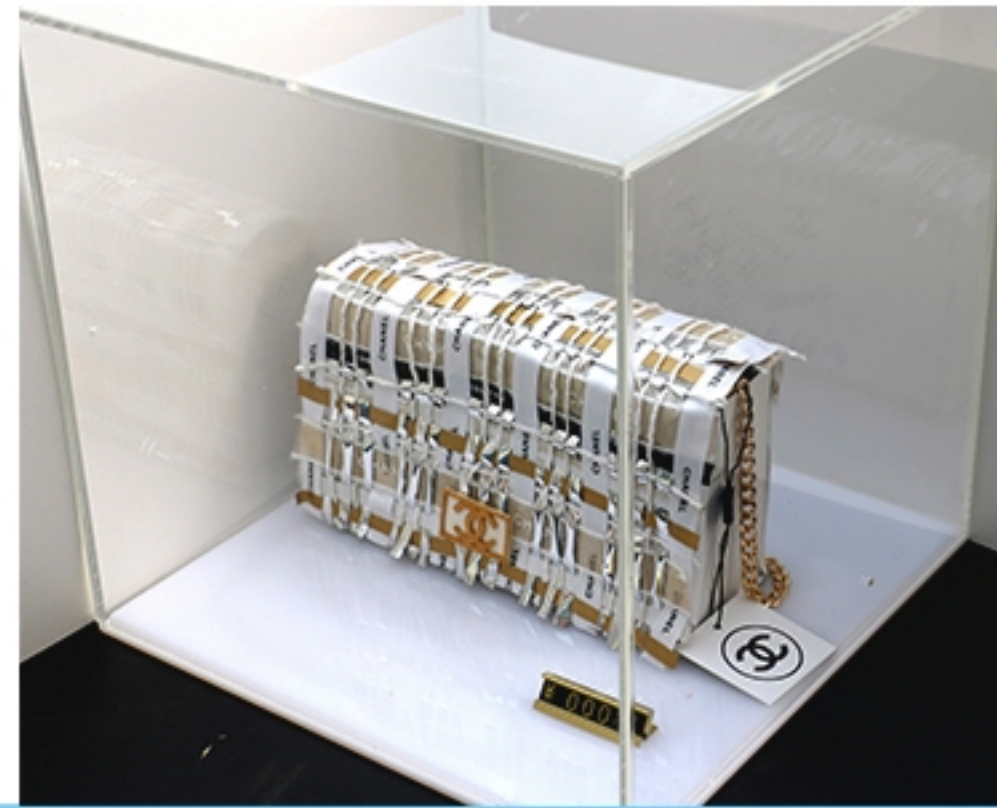


MADE WITH REAL CHANEL PACKAGES



Final work which have been shown in the exhibition.

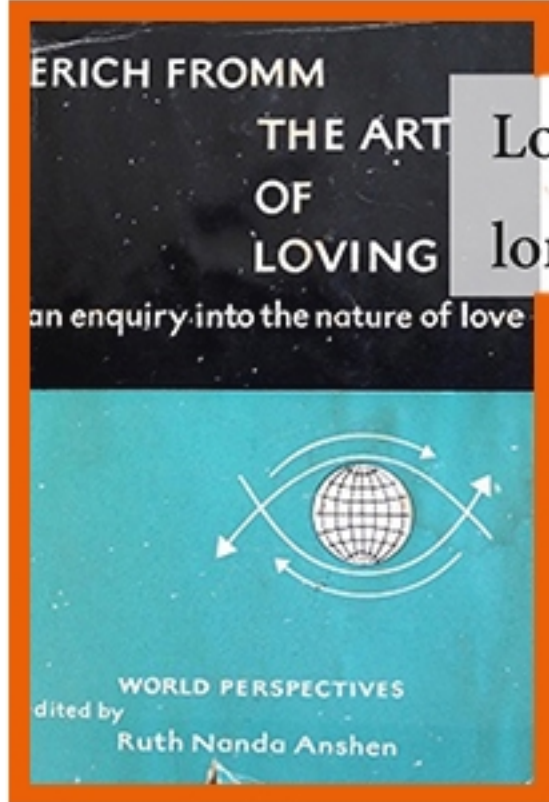
Title: "New Arrive"
 Size: 50x50x50cm
 Media: Package paper and shopping bag of luxury products(purchase), metal(purchase), Display box(purchase)



Inspiration on objective

Artwork No.6

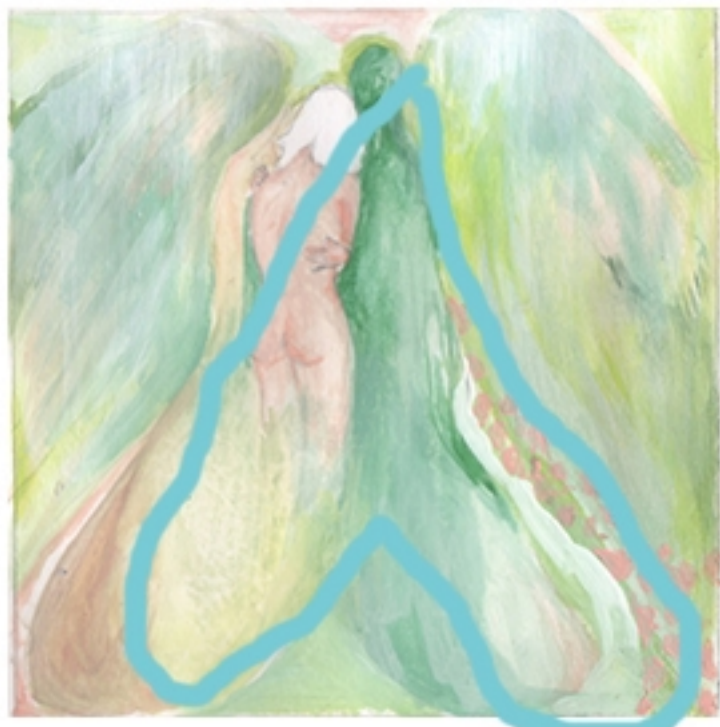
Objective: To show that, the reason that we love is our fear of loneliness. Therefore, love is motivated by our self-interest. The "selfless love" that we eulogize is not exist.



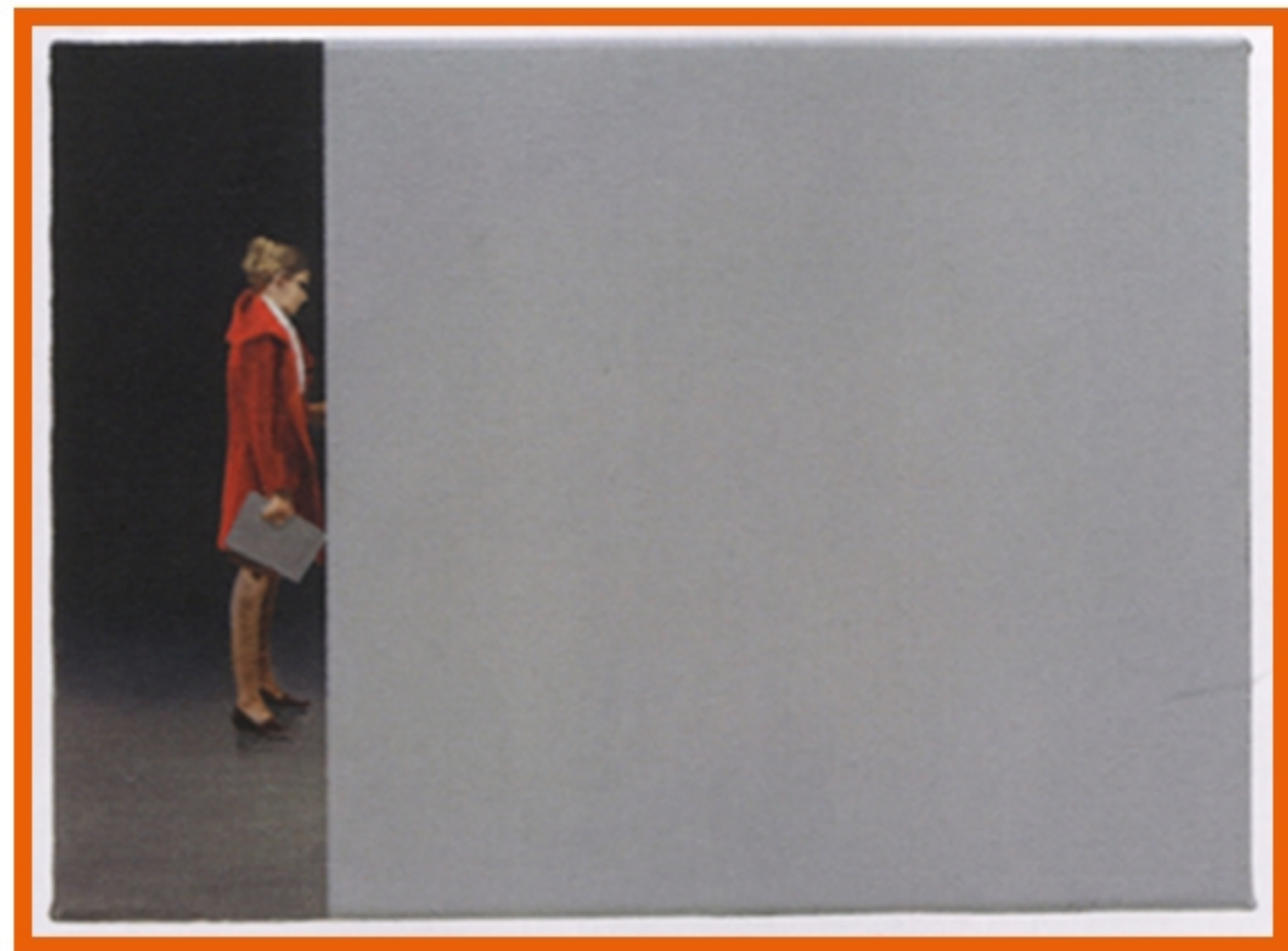
Love is the only way to escape loneliness—adopt from Fromm



Erich Fromm, 1900-1980
 Humanism philosopher



Repetition of heart-shape
 Rough design



Tür (door)
 2006, Tim Eitel, Germany
 Oil on linen, 20.3*27.9cm(sources from the book "Painting Now")

In the artwork, *Door*. The artist repeat using the rectangle 4 times including the picture plane, 5 including the implied rectangle of the door itself. The shape of the rectangle is also the shape of the door. This design make viewers imagine the door(title), though the door is not shown on the artwork. I also like to use repetition with symbol and association to express the objective implicitly.

Embrace is an act which shows a intimate relationship between people. But the girl in the design is hugging herself. This help express my objec- tive which tells our self-interests result in "love". Therefore, we are ultimatly lonely.

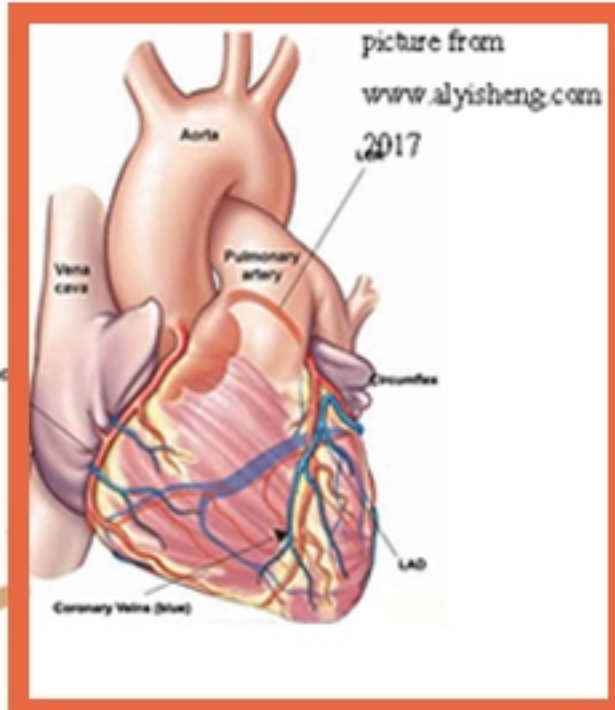
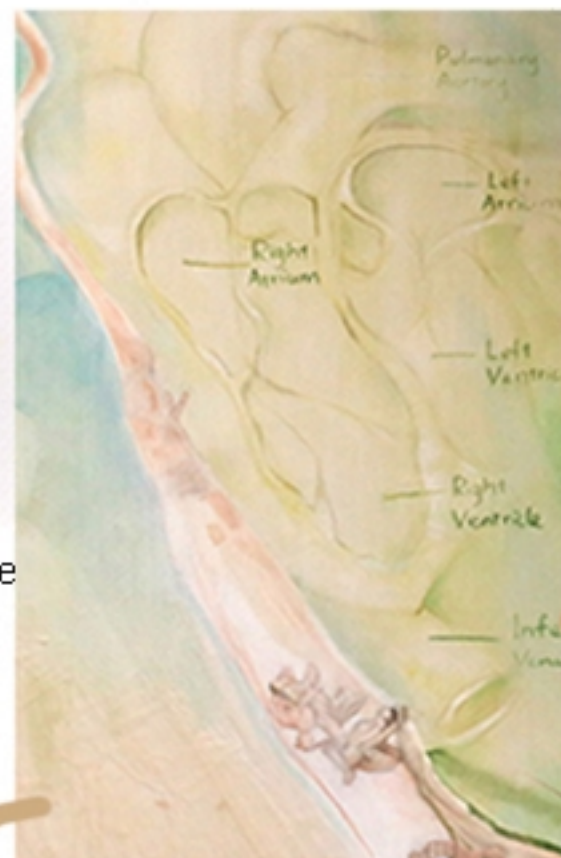


Took by myself
september
14th 2016

Observational Drawing



-It's my habit to make a observational before making the final design to make sure I an familar to the sybject that I'm going to paint



Wax



Rough Design



Observational Drawing

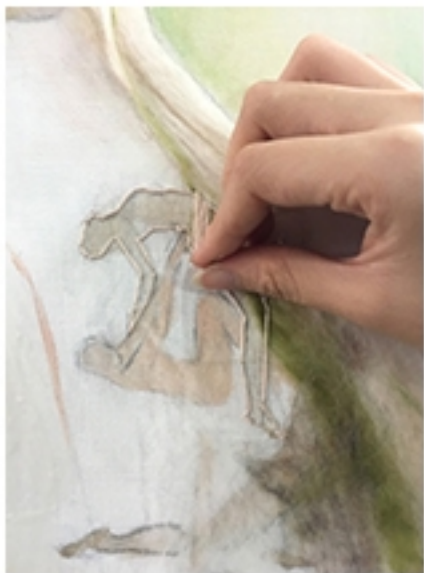


picture: weibo.com/taodancetheater<5> 2013 performed in the Stadsschouwurg Amsterdam, Julians Festival

Wax (candle), flower and cross are all symbols of funeral, I use them to express my perspective that, the reason we love is our self-interest, therefore, love is "died"



artificial flower and cross(in the back of the canvas)



Combine sewing and wool with painting to give the artwork more layers

The people who struggle with each other indicate the universality of the artwork. It also helps form a eye-path through the artwork. And the depth there make viewers feels connected with the artwork.

Final work (in the exhibition)

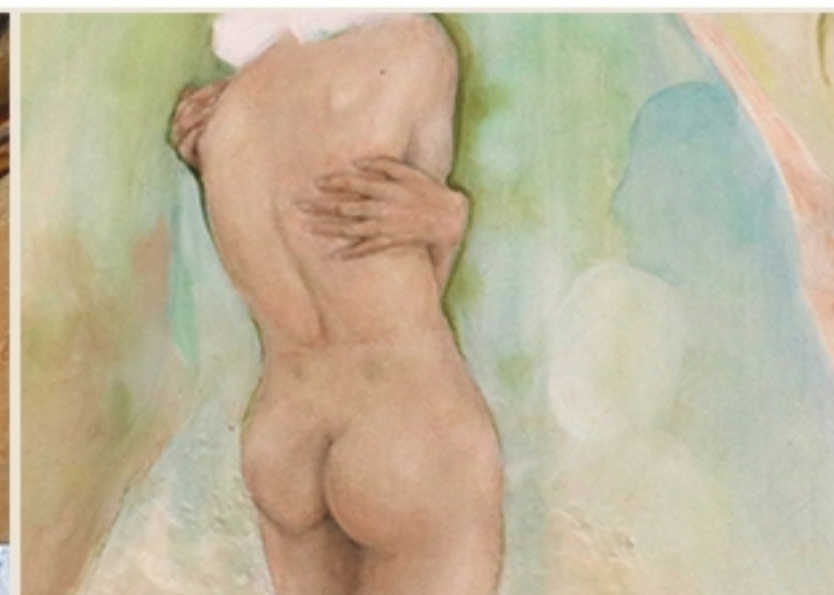


Title: "Love, Our Ultimate Solitude"

Size: 100×100cm

Media: oil on canvas, sewing, wax, artificial flowers (purchased, not made)

The objective is to express that, love is a behavior to escape loneliness (influenced by the psychologist, Erich Fromm). The design of the artwork is influenced by Tim Eitel's special use of repetition which coincides with the objective, here, the symbolic heart shape and the anatomy heart shape get used repetitively. The use of symbols of funeral (candle, flower, cross) creates a negative emotion and the sewing of several human figures indicates that universality of the objective.



Comparasion and Reflection

Reflection: Compare to the two oil paintings I made before, I get some improvement on the oil painting skill. The light and shadow are more natural and I blend the transition part more natural. Beside this, I Also made a better sewing this time. The sewing is more natural this time.



Artwork No.7 *Cinderella*

Objective: To show some girls want use beautiful clothes and luxury product to hide there aloneness and self-abasement, but in fact they did not made it and get lost on the way to chase money and luxury life. (The theme of this artwork is simmlar to artwork No.5. They are revealing the same fact which is people blind chase of luxury lifestyle and money.)



In this artwork, Andy Warhol has appropriated Leonardo da Vinci's work. He use repetition and black and red color in the artwork to decline the holy feeling that this religion artwork brings. He used a contrast between fake and genuine to make us understand the difference between older traditional ways and modern mass-production mass-culture. I also want to use the contrast betwee FAKE and REAL to reveal the fact of life.

THE LAST SUPPER, 1986 | ACRYLIC AND SILKSCREEN INK ON CANVAS, 1998 (198.1*777.2CM) Andy Warhol

Design Process

Rough Design

The dress would made by packages of luxury products, and the size of the dress would be huge, which help shows the key word in the objective statement, "hide" . The artwork is absolutly not a luxury product, but it is made by luxury products(packages of luxury goods). This contrast reveal the fact that, fake thing is always fack no matter how it pretent to be real.The dress would be hang up and people can walk through it. Therefore the viewers can understand the theme better by interact with this artwork

Final Design

By concerning the feasibility and safety of the rough design, I deside to cancel the plan of hang the dress up and let people walk through it.

The dress would be put on the ground, so viewers can over look the dress, and this way of display express a kind of loneliess emotion.



Concept

I want to use the dress to show that some girls pursuit money and luxury life blindly to hide their self-abasement and loneliness. I think their behavior would not help them solve the problem.

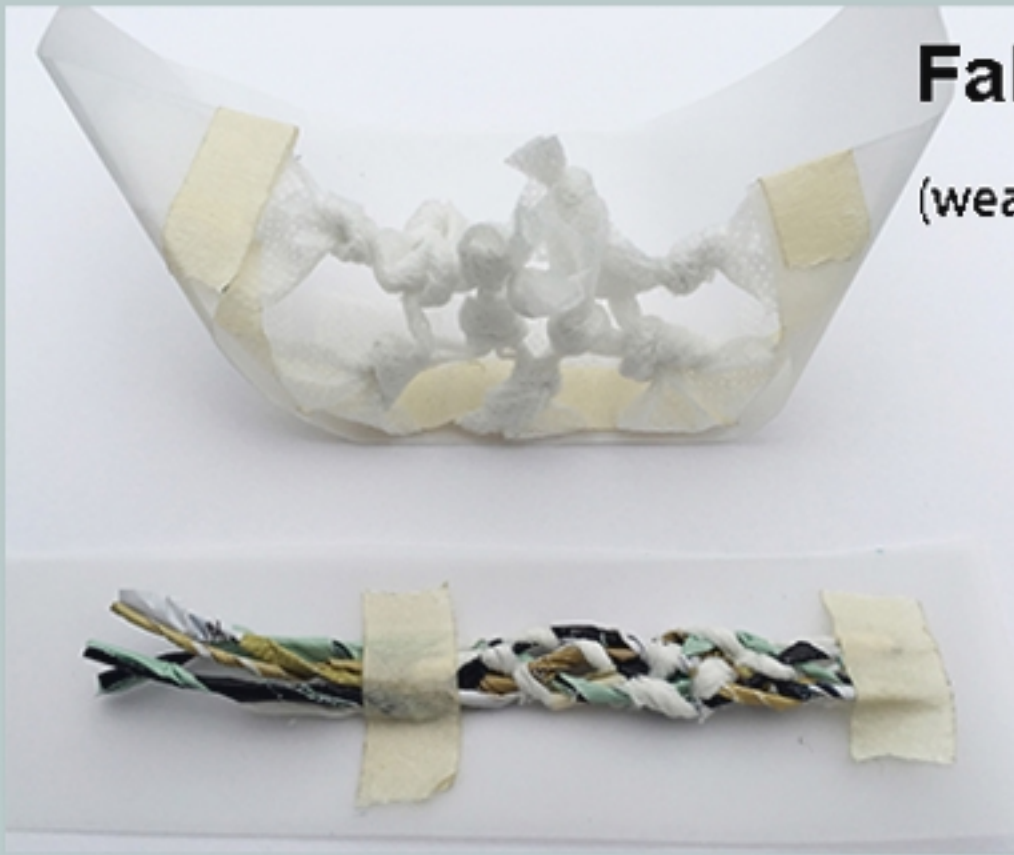


symbols

- packages of luxury goods represent both real and fake luxury life of them.
- paper packages of luxury goods give a fragile feeling which signify their idea of use luxury to hide their loneliness is unrealistic.
- Huge dress help express the idea of "hide their self-abasement and loneliness.
- Weaving represent the people's desire

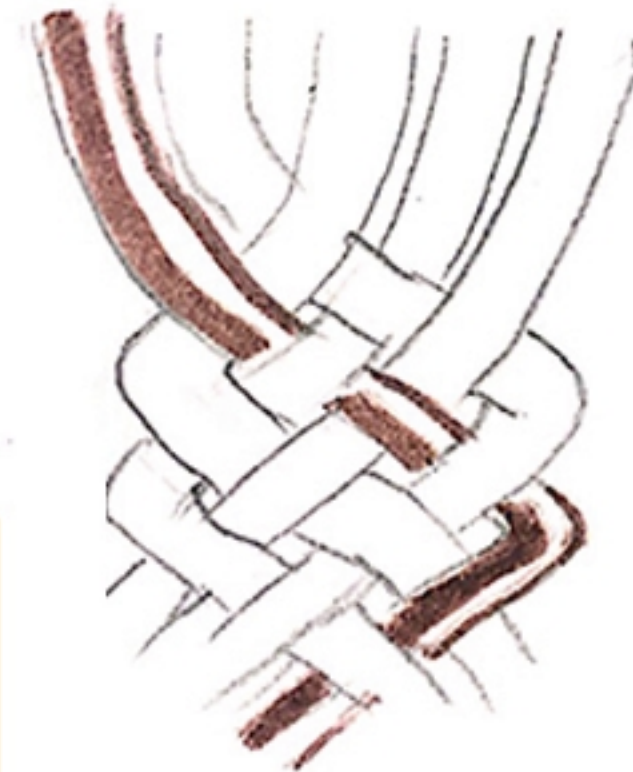
Fabric exploration

(weaving and paper folding)

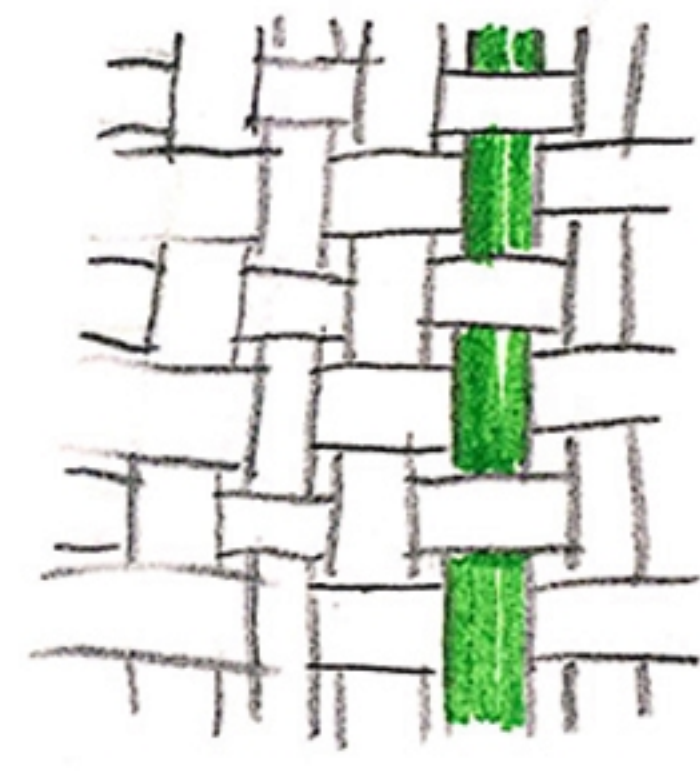


Process of making the dress

1st kind



2nd kind





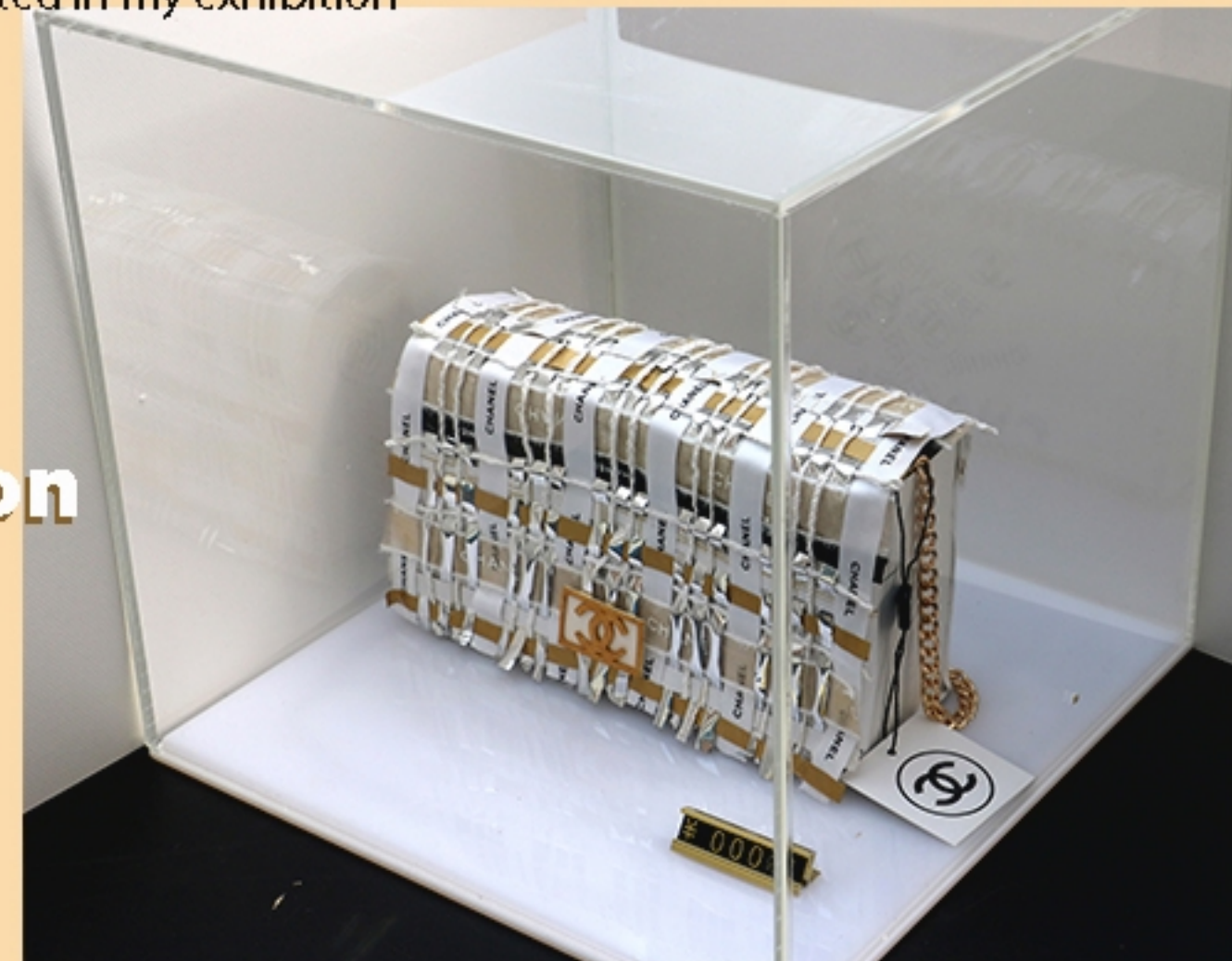
Comparasion



Artwork No.7 Title: *Cinderella*

Size: To-scale, to fit a real person, modifiable

Media: weaving made from package paper, ribbon, and shopping bags from the packaging of purchased luxury products, cloth (purchased)



Artwork No.5 Title: *New Arrival*

Size: 50×50×50cm

Media: package paper and shopping bag of luxury products, metal, display box and price indicator (all purchased)

Beside the No.7 weaving artwork, I also used weaving technique in Artwork No.5. The two artworks have similar objective and use the same media as well. By compare the two artwork, the my improvement on techniqque is very obvious. The size is bigger, and the weaving looks more even.

Artwork No.8 and No.11, silk screen printing, *Infinite* and *Jail*



Title: *Jail*
Size: 32×27cm
Media: silk screen printing on paper

Title: *Infinite* Size: 40×50cm
Media: silk screen printing on paper, diptych

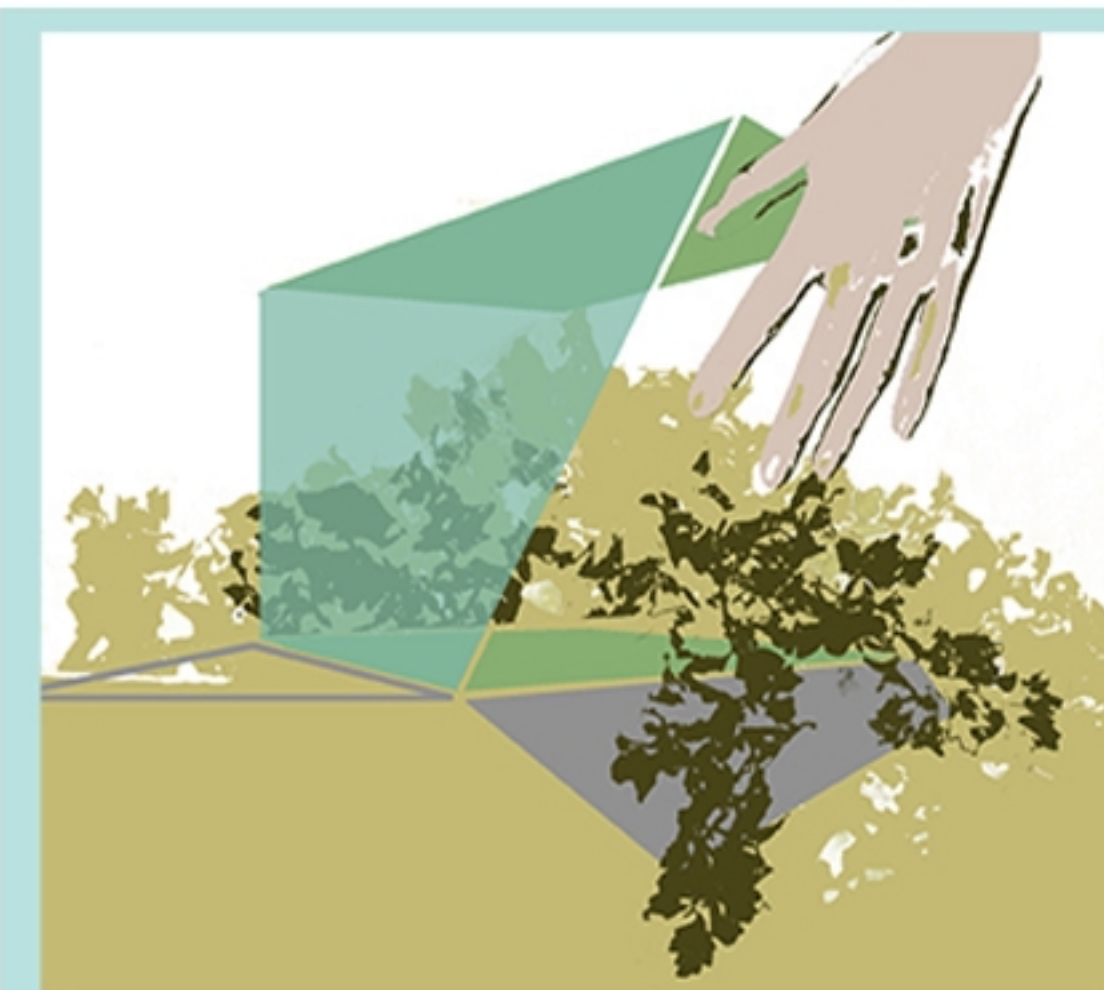
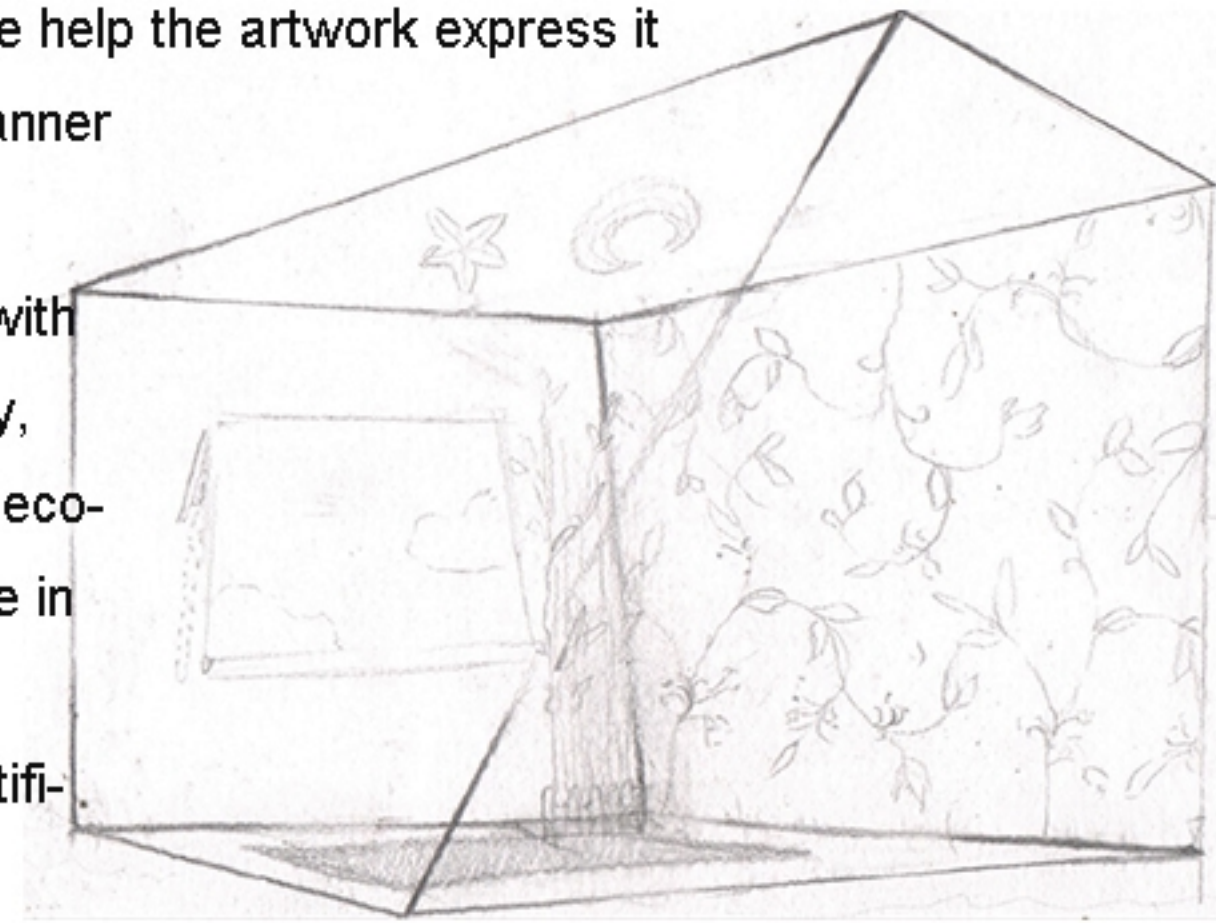




The use of geometric shape help the artwork express it objective in an objective manner

Rough Design

The twisty box (associate with room, represent the society, imprison) Artificial natural decoration (human's silly act, live in city which is far away from nature, but decorate we artificial natural decoration.



Final Design

By concerning the feasibility and difficulty of the design, I finally use photoshop made the design. And use human hand as a direct expression of human's manipulate. And use brown paper which associate with the color of soil to print the artwork.

Objective:

The isolation between human and nature result in our aloneness. People have to understand the insignificance of human.

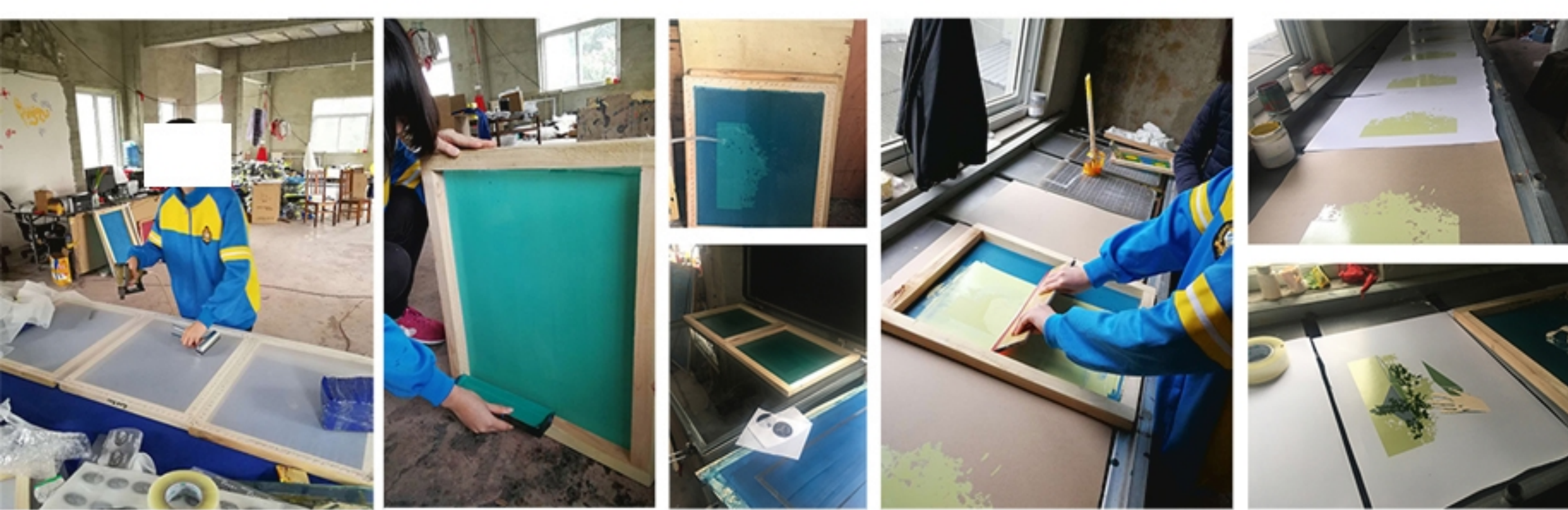
Lucian Freud, 'Interior with Plant, Reflection Listening(-self-portrait)', 1967/68 Oil on canvas, 121.8*121.8cm (One of the three artworks in Comparative study) source from the book, FREUD edit by Sebastian Smees, published by Taschen

In Freud's artwork, he use

1. the contrast of scale between human figure and plants,
2. Allegorical subjects --pot and soil-like texture
3. strong biomorphic line of leaf to bisect the figure into 2 distinct levels of abstraction

to show the complex and mutually restricted relationship between human society and nature.

Freud's artwork inspires me to think about the result of the isolation between human and nature. And inspire me to use the idea of using the struggle and strange relationship between human and nature to be the theme of the artwork.



Final Work, "Jail" Exhibited in my exhibition

The process of making SILK SCREEN PRINTING

Step1--Make the silk-screen:

1. Calculate the size of the silk screen that you need base on the design
2. Use the air stapler to stable the frame and screen
3. Apply photo-sensitive resist on the screen

Step2-- Exposure

1. stick the film of design on screens (1 screen, 1 layer)
2. Put screens into exposure machine.

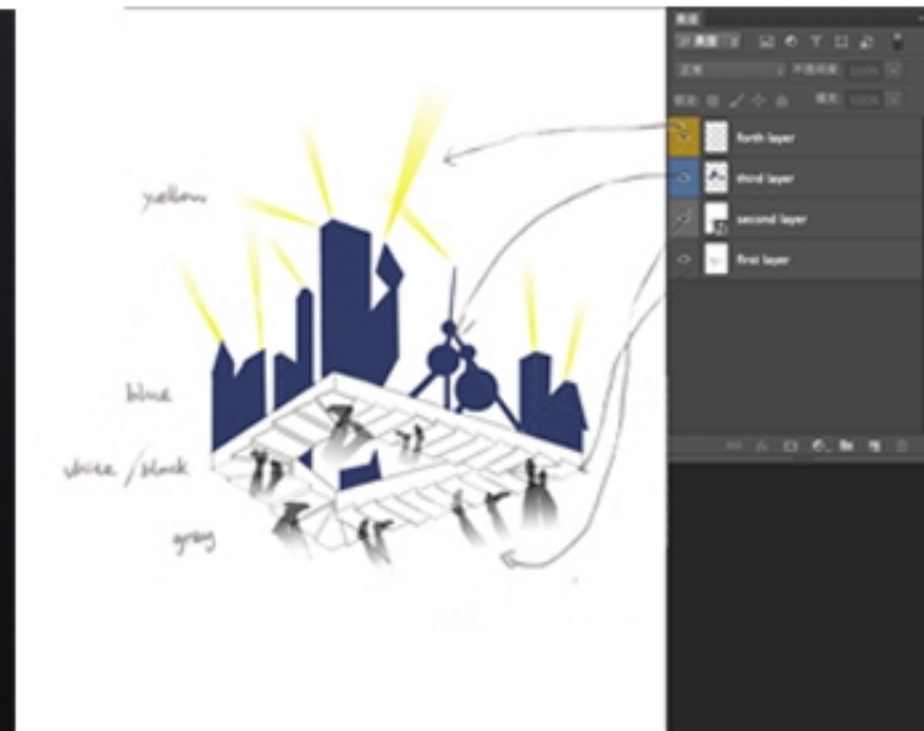
3. Take the screens out, and use water to take off a part of the resist glue

Step3-- Print

1. Cut the paper into right size and put the paper on the print table.
2. Prepare ink for all the layers
3. Print one layer after the previous layer dry

Step4--Sign

1. Sign title of prints, edition of prints, name and date on prints.



Reflection

No.8, the previous silk screen print that I've made. Compare with these two silk screen print, we can easily found out my improvement on both design and silk screen technique. The artwork is more complex and more interesting.

Artwork No.9

What's the nature of Aloneness?

Human nature? GOOD OR EVIL OR BOTH? contradict? paradox?

Objective: To show that aloneness is the paradox of humanity. It is natural and reflects the inner conflicts of human beings, i.e. the desire to resonate yet the necessity for privacy, the need to escape loneliness yet the indifference to others.

Critical hypothesis:

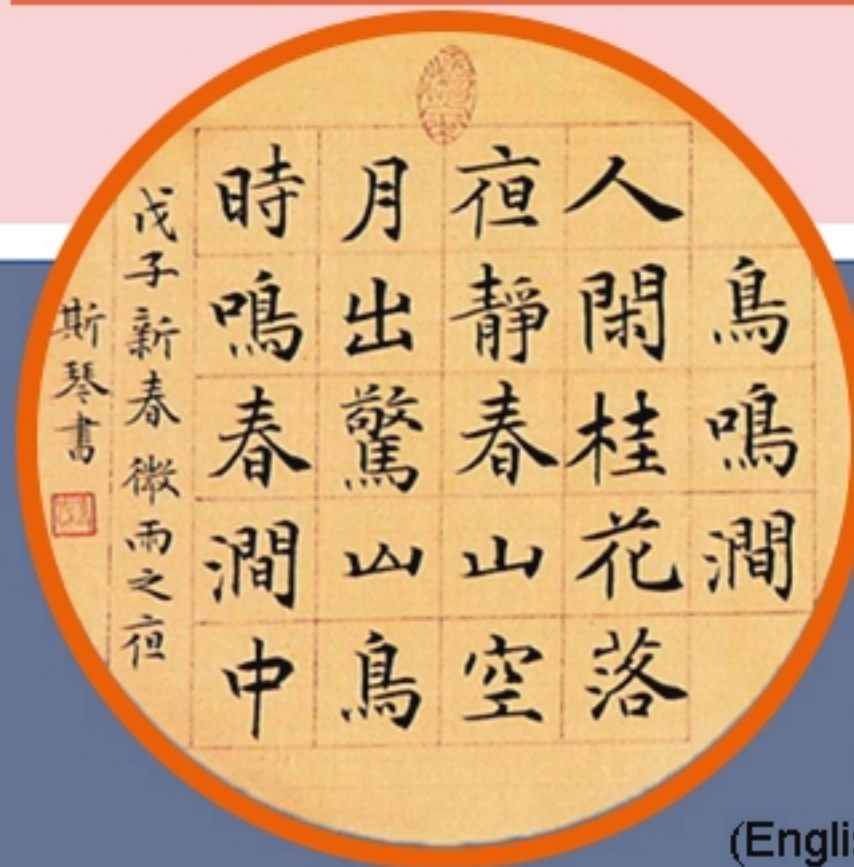
To show the beauty of women with poetic color and brushwork.

In this artwork, artist Sanyu combined both eastern and western painting skill and art culture. He painted the theme which is not allowed to paint in traditional Chinese art culture, nudes. He used Chinese poetic format (a special combination of stillness and action) and typical graceful line with western oil painting.

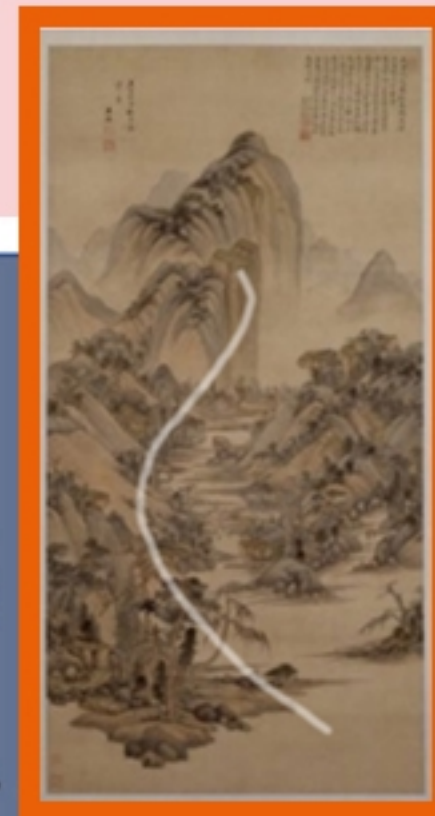
I also want to use the typical Chinese traditional skill and poetic format (a special combination of stillness and action) to give my artwork a traditional flavor.



Sanyu, Five nudes, Sanyu, 1929, 81*55cm, 1929, oil on fiberboard source from www.artofsanyu.com



Bird Chirping over the Hill Creek
Wang Wei
People enjoy their leisure when cassias fall.
Nights are still and the spring hills tranquil.
An emerging moon alarms the birds;
They hover over the spring creek and chirp.
(English translation version) Translated by Gong Jinghao,
from the book, A Bouquet of Pomes From China's Tang Dynasty.



Landscape after Huang Gongwang, Qing dynasty (1644-1911), ink and color on silk, hanging scroll, Date: 1660, Artist(s): Wang Jian (1598-1677), Dimensions: 122.5 × 61.5 cm



Source from www.dpm.org.cn

Tricolor Pottery Figurine of a Horse, Tan

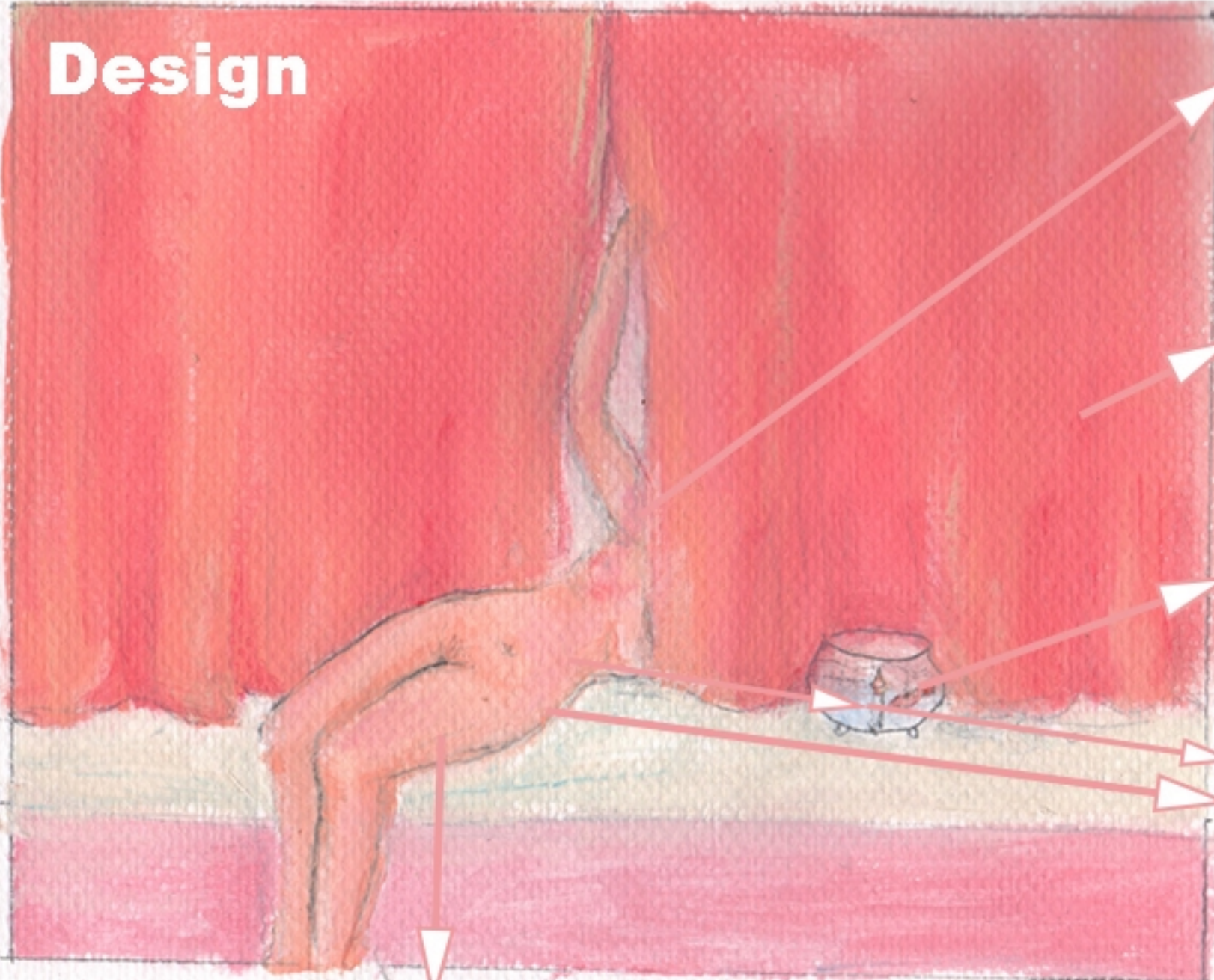
Example of using combine stillness and action in poetry and example of using graceful curves in artwork

Calligraphy of "Bird Chirping over the Hill Creek",

wrote by Si Qing

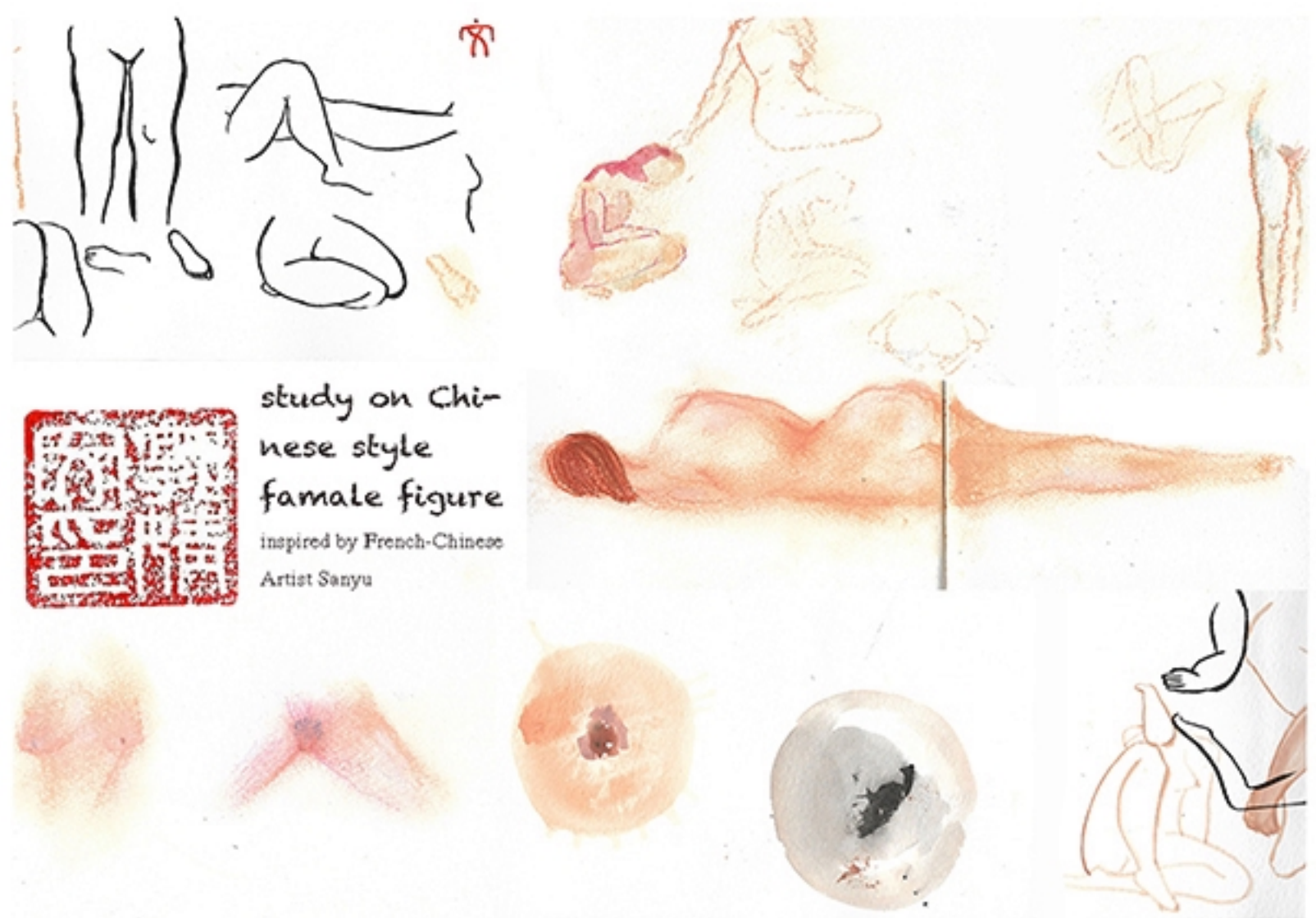
The poet not only combine | the activity and stillness, but also use the act and chirp of the birds to set the still and quiet mountain off, which depict a tranquil and vitality scene of the hills in a spring night.

Design



The girl is naked --- privacy
Curtain --- privacy and public The action of the girl hide behind the curtain suggest the conflicting and struggled human nature and nature of aloneness.
The use of pink: Pink always make people feel comfortable and warm. I think it is the best color to promote people think about our nature.
Gold fish is another state of aloneness: people put gold fish into bowl. The fish are not free and be asked for show it privacy.
Women-still, Fish-action
this two things form a special Chinese poetry format-combination of stillness and action(Influenced by Sanyu's *Five Nude*)
Reason of choseing woman: In my point of view, women are more sensitive than men, they are more easily to feel lonely and want to escape loneliness by shair privacy with others.

The Chinese traditional style of graceful curve and light pigment



study on Chinese style female figure
inspired by French-Chinese Artist Sanyu



Drawing practice



Final Work, exhibited in my exhibition

Hide and Seek, 80*60

oil painting on canvas

Reflection:

I think I did a better job in study others artwork, choose objective and painting skill. I think I get a lot of improvement by making this artwork.



In the final work, I put a real curtain on the artwork. Therefore, there is a repetition of curtain (real and illustration). The real curtain not only strengthen the expression of theme (the nature of aloneness is the paradox between privacy and public), but also make the artwork be interactive, and attract viewers' attention by invite them participate in the artwork.



Picture in the exhibition, took by my sister

Artwork No.10

Play Music to the Cow II

Objective: To show the aloneness which caused by the lack of understanding and communication.

“对牛谈琴”

Play the harp to the cow

A traditional Chinese instrument

This is a Chinese idiom which means talk to deaf ears.

According to my own personal experience, I think this kind of lack of understanding between people led to our loneliness.



THE LAST SUPPER, 1986 | ACRYLIC AND SILKSCREEN INK ON CANVAS, 1998 (198.1*777.2CM) Andy Warhol
 Source from the book *Andy WARHOL 365 takes*, by the staff of The Andy Warhol Museum, published ABRAMS.

In Warhol's artwork, he **appropriated** Leonardo da Vinci's work. He use repetition and black and red color in the artwork to decline the holy feeling that this religion artwork brings. He used a contrast between fake and genuine to make us understand the difference between older traditional ways and modern mass-production mass-culture.

In the *Creation of Adam*, the artist use his wonderful painting skill tells the story of god create human. The **relationship between God and Adam** consist **give and take**. God have a **superior status** than human.



Creation of Adam, Michelangelo, c. 1512, Fresco, 280*570cm

Source from the book Gardner's Art Through The Ages-a global history, third edition, Fred S. Kleiner, published by Wadsworth



I would like to **appropriated** the famous painting, *Creation of Adam*, as the original image to create my artwork, and use the relationship between God and Adam to satirize the relationship between human and nature.

Explanation of Design

use the same background and composition as "The Creation of Adam" to attract viewers' attention and use the relationship between Adam and God my design
 (Give and accept, care and worship)

Both of them (music & grass) take the thing they like but didn't meet other's need

"Play the music to the cow"



Process

also interactive



Title: "Play Music to the Cow II"

Size: 10×16×4cm

Media: oil on music box purchase, original image, "the creation of Adam" of Michelangelo.

The artwork use the chinese idiom "Play Music to the Cow" in this painting. This idiom means preach to deaf ears. It shows some kind of aloneness which caused by lack of understanding. The artwork is built on a found music box, which have combine real materials and illustration. The artwork influenced by "The Last Supper|1866" of Andy Warhol (use famous painting as an element of design), and "the creation of Adam" of Michelangelo (use the relationship between God and Adam).



The artwork No.10 have the same theme as Artwork No.4. Both of them used the Chinese idiom, "Play Music to the Cow" as a main thing in design, and both of them are interactive artworks. By compare them two, you can see the artwork No.10 express the objective more clear and logical, and artwork No.4 seems express the idea directly (even too direct). Beside this, the artwork No.10 do better on attract viewers' attention since it use a famous painting as the original image. However, I think both of them successfully expressed their objective, because the idiom "play Music to the Cow" is very suitable for the theme.